

# HumaStar 300SR

## Random Access Clinical Chemistry System for Medium-Sized Laboratories

- › Same system reagents as HumaStar 600
- › Proven hardware & software of HumaStar 100/200
- › Eco-friendly with ProClean 2.0 Technology

### CLINICAL CHEMISTRY

CoreLab DX



Clinical Chemistry Line



Eco-friendly  
ProClean 2.0  
Technology

**Human**

Diagnostics Worldwide

# HumaStar 300SR

## Rock-solid, Reliable and Worry-free

- Upgrade to proven quality and cutting-edge technology
- Provide reliable results
- Ease your daily routine

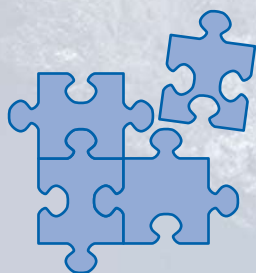
**Proven Hardware  
and Software Quality of  
HumaStar 100 / 200**

**More than 40 Years  
of Experience in  
Clinical Chemistry**



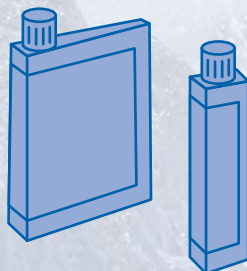
### Worry-free Package

- Perfectly matching analyzer, reagents, methods, calibrators, controls



### Adapted to your Needs

- Two reagent kit sizes
- Ready-to-use and validated



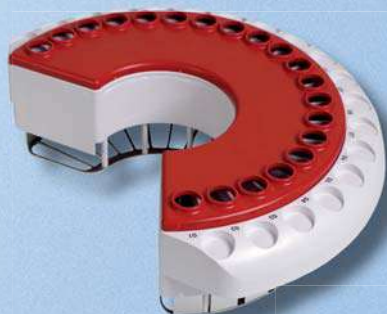
### Intuitive and Powerful Software

- Automatic check of instrument and results





## Discover the Features



### Maximum Onboard Stability

Two reagent trays with improved cooling



### Full Flexibility

Huge variety of primary and secondary sample tubes



### Automated Operation

Sample barcode reader and LIS



Eco-friendly  
**ProClean 2.0**  
Technology

### ProClean 2.0 Technology

- > Minimal carry-over – dual solution wash station
- > Low water consumption (< 3 l/h)
- > Segregation and reduction of biohazard waste

**Unique in its class**

# HumaStar 300SR

## Technical Data

### Operation

- > Clinical chemistry and turbidimetry
- > Random access, STAT
- > System reagent methods preinstalled and validated
- > Open channels with barcoded bottles
- > Up to 290 tests/hour

### Samples

- > Removable sample tray
- > 60 positions
- > 12.5 mm primary tubes and 1 ml cups
- > Optional 16 mm tubes and 3.5 ml cups
- > Automatic pre- and post-dilution
- > Internal barcode reader

### Reagents & solutions

- > 2 removable reagent trays
- > 40 positions
- > 70 and 25 ml bottles
- > Electronically controlled cooling

### Pipetting

- > 2 pipetting needles
- > Needle shock detector
- > Capacitive liquid level detector
- > Internal-, external- and method specific wash procedures

### Reaction

- > 8-step cuvette wash station
- > Less than 3 l/h water consumption
- > Two different wash solutions
- > Method specific wash procedures
- > Separate containers for normal and high contaminated waste

### Software

- > External computer required
- > LIS: Bi-directional, ASTM, ethernet
- > English, French, Spanish
- > Designed for touchscreen
- > Automatic check of reagents, expiry dates, calibration, hardware, maintenance, reaction and results

### Environment

- > 100–240 V, 50/60 Hz
- > Less than 300 VA
- > 93 x 74 x 60 cm (W x D x H)
- > Approx. 75 kg
- > 16–30 °C, < 80 % humidity

### Reagent kits

Please see our flyer „Clinical Chemistry Line“ and catalog for available reagent kits and wash solutions.



Reagent Overview

### Ordering Information

	REF
HumaStar 300SR	16930

### Accessories

	REF
Sample Tray 12.5 mm + cups	16890/10
Sample Tray 16 mm + cups	16890/11
Reagent Tray 20 positions	16930/13
Personal Computer	18992P
TFT Screen	17901M
Touchscreen Monitor	18991MT
Laser Printer	18993L

### Consumables

	REF
Sample Tubes 5 ml 1000 pcs	16890/30
Sample Cups 1 ml 1000 pcs	16890/31
Sample Cups 2 ml 500 pcs	17470/59
Reagent Bottles 25 ml 10 pcs (1,500 tests)	16770/25
Reagent Bottles 70 ml 10 pcs (3,500 tests)	16770/70

All information preliminary and subject to change

# Human

Diagnostics Worldwide



HUMAN Gesellschaft für Biochemica und Diagnostica mbH  
Max-Planck-Ring 21 · 65205 Wiesbaden · Germany  
Tel. +49 6122-9988-0 · Fax +49 6122-9988-100 · e-mail: human@human.de · www.human.de